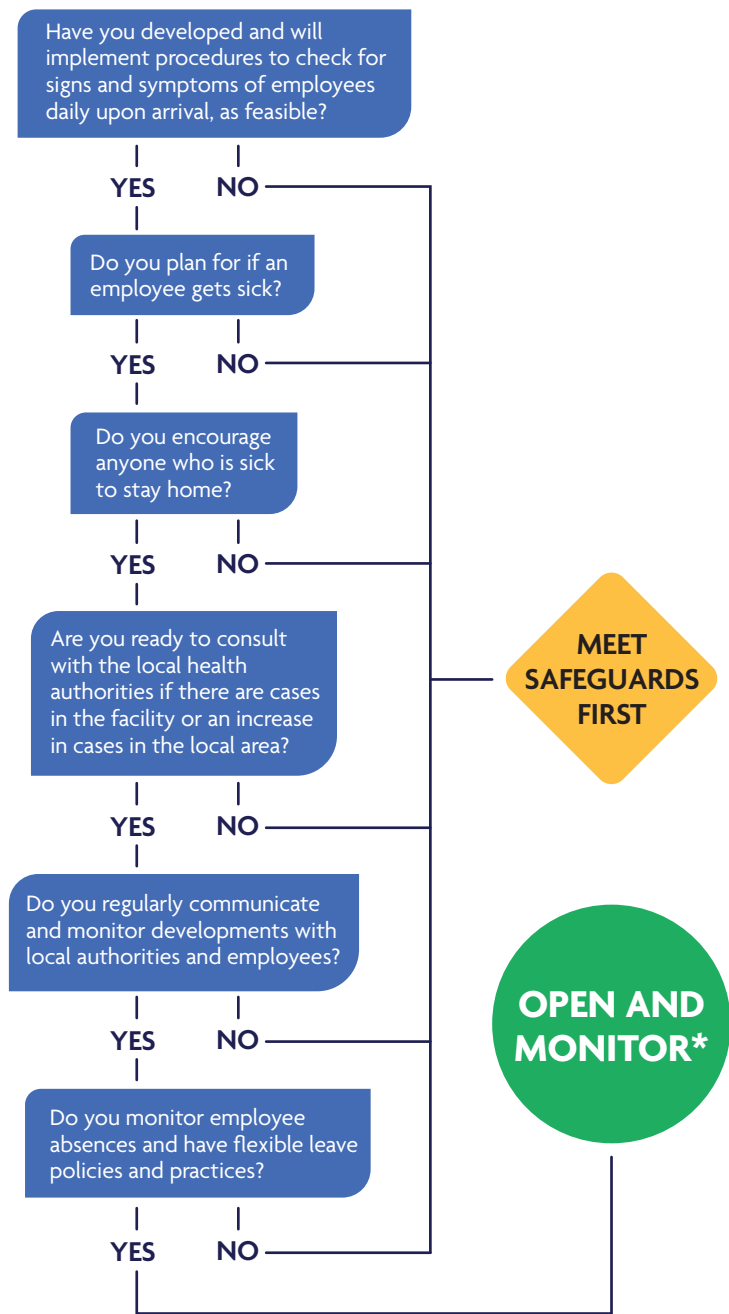
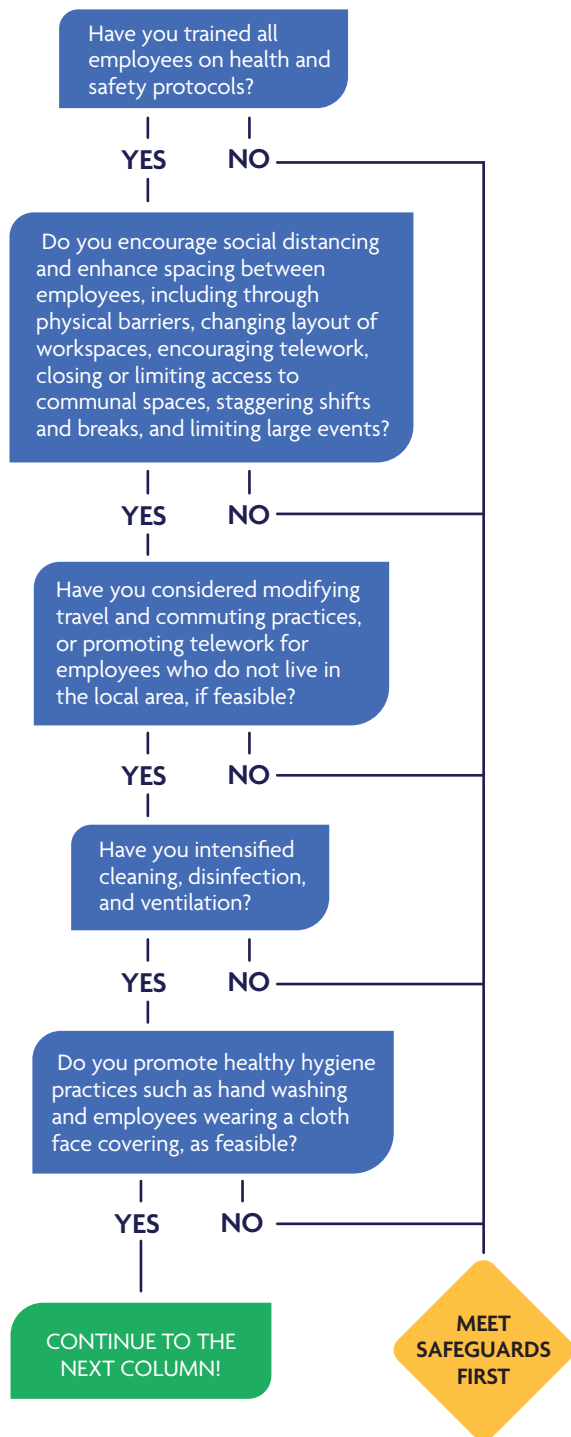
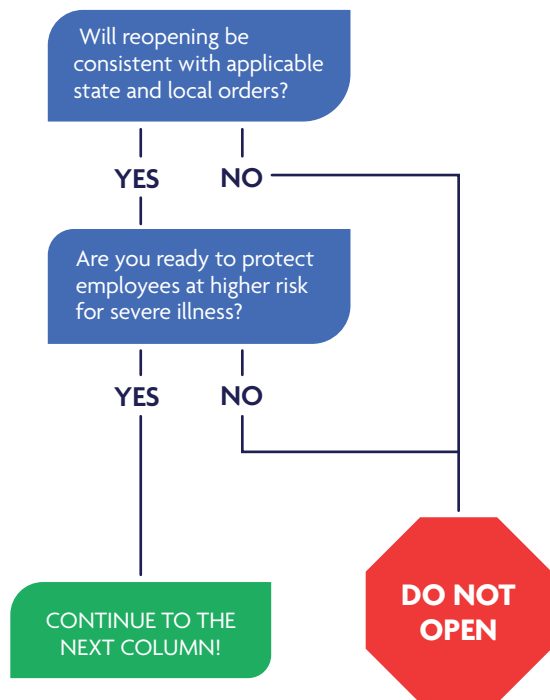


Should I Consider Reopening?

The purpose of this tool is to assist employers in making (re)opening decisions during the COVID-19 pandemic, especially to protect vulnerable workers. It is important to check with state and local health officials and other partners to determine the most appropriate actions while adjusting to meet the unique needs and circumstances of the local community.

Start Here!



*COVID-19 is excluded from coverages. When reopening, be sure to CONTINUE using CDC guidelines in order to protect your owners, tenants, and employees**.
 **Workers Compensation may not exclude COVID-19, however the employee has the burden of proof.